



gibsonhoney

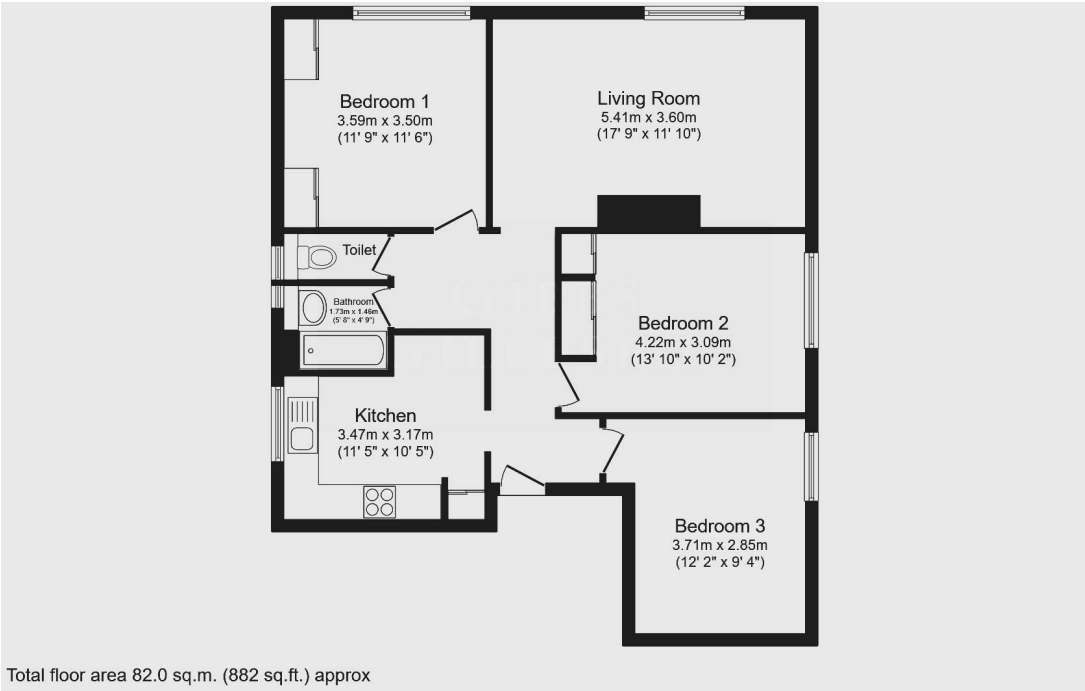


Haydon Drive, Pinner, HA5 2PN
£1,925



gibsonhoney

A rarely available and beautifully updated three double bedroom top floor apartment, offering generous proportions, excellent natural light, and a stylish modern finish throughout. The accommodation comprises a contemporary fitted kitchen with integrated appliances including a dishwasher, three spacious double bedrooms, a modern bathroom suite, and a separate W/C. The property further benefits from access to attractive communal gardens and convenient on-street parking. Situated in a sought-after residential area of Pinner, this apartment is ideally located within easy reach of Northwood Hills Station, a variety of local shops, popular restaurants, and highly regarded schools making it a superb choice for families or professionals alike.



Energy Efficiency Rating		
	Current	Potential
Very energy efficient - lower running costs		
(92 plus) A		
(81-91) B		
(69-80) C		77
(55-68) D	67	
(39-54) E		
(21-38) F		
(1-20) G		
Not energy efficient - higher running costs		
England & Wales		EU Directive 2002/91/EC

You may download, store and use the material for your own personal use and research. You may not republish, retransmit, redistribute or otherwise make the material available to any party or make the same available on any website. These particulars, whilst believed to be accurate are set out as a general outline only for guidance and do not constitute any part of an offer or contract. Intending purchasers should not rely on them as statements or representation of fact, but must satisfy themselves by inspection or otherwise as to their accuracy. No person in this firms employment has the authority to make or give any representation or warranty in respect of the property.